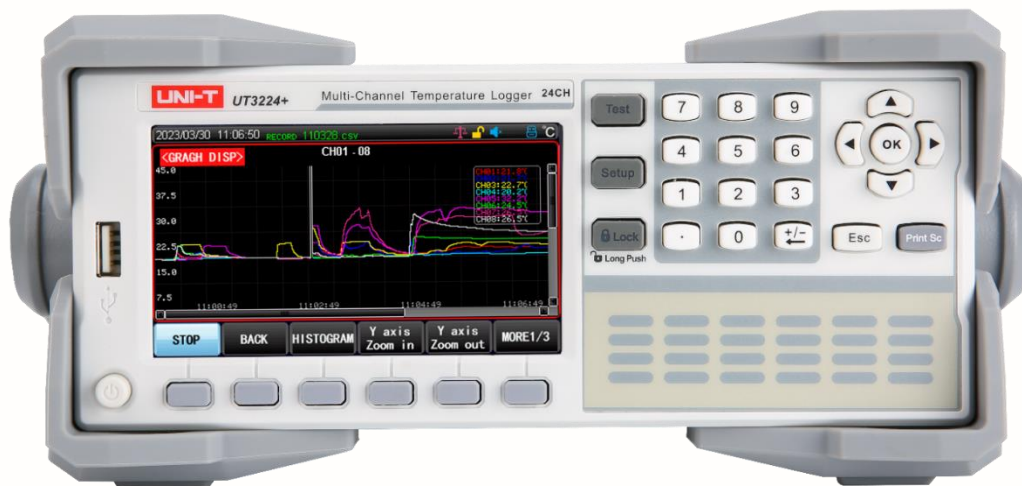


**UNI-T®**

Instruments.uni-trend.com



# Datasheet

UT3200+ Series Multi-channel Temperature Tester

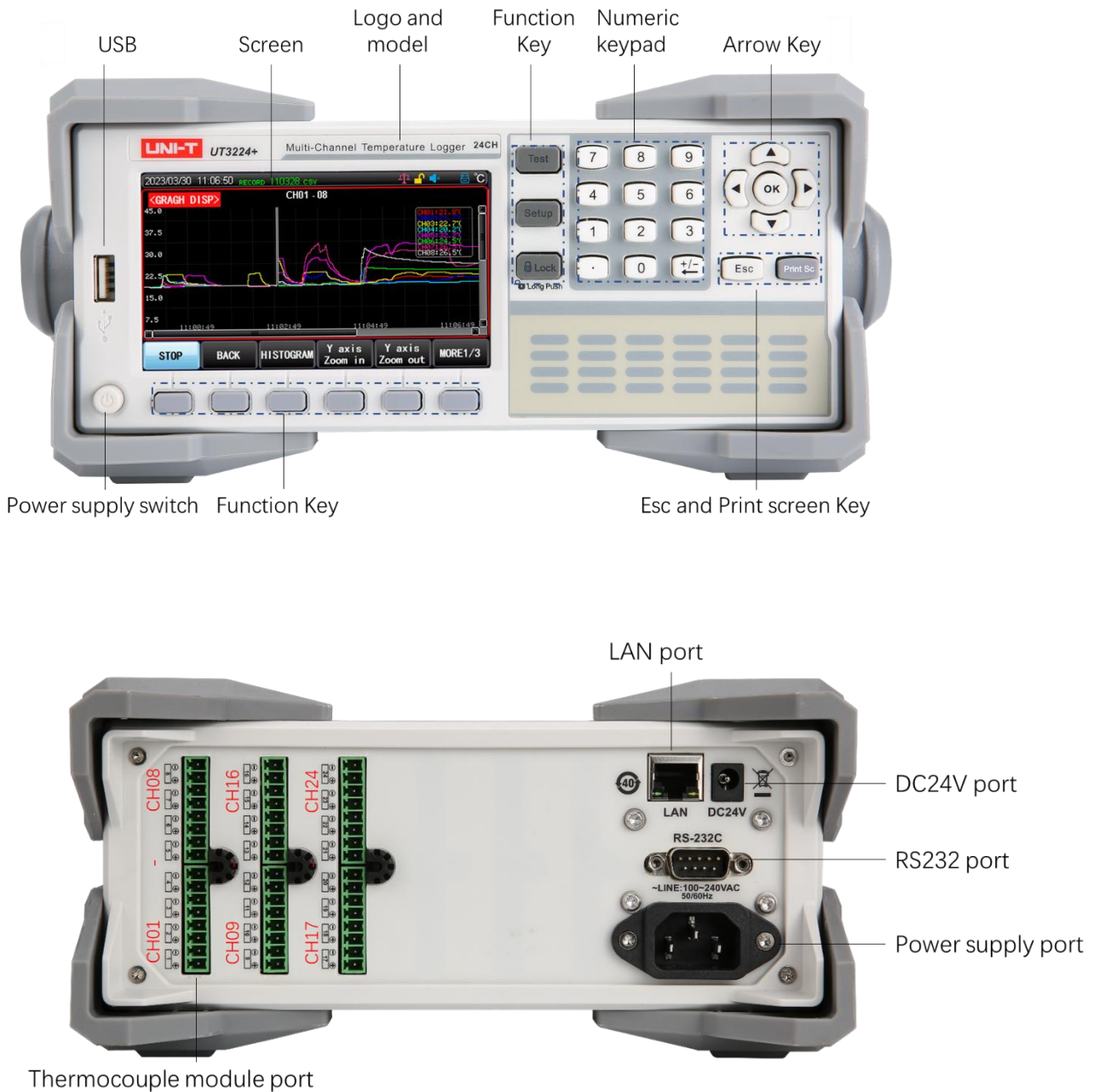
# 1. Characteristics

- 4.3 inch true color LCD
- Wide range of adaptability, supports Type K/N/E/J/T/R/S/B thermocouple
- Measurement range:  $-200^{\circ}\text{C} - 1800^{\circ}\text{C}$
- The main parameters of the temperature test are displayed in 6 digits, and the resolution is  $0.01^{\circ}\text{C}$ .
- Two scanning rate: fast (according to different model), slow
- Automatic detection of open-circuit thermocouple
- Direct numerical value reading, histogram and curve chart display mode.
- Cold junction compensation
- 8G USB and USB HOST interface, USB storage
- File management can keep the current setup of the instrument.
- The instrument is equipped with Type K thermocouple test line 2 meters, it can measure the temperature range  $-20^{\circ}\text{C} - 200^{\circ}\text{C}$ .
- Alarm for over upper/lower limit. Alert for reading changing of over-limit. The upper limit and lower limit of temperature data in each channel can be set.
- RS-232C, LAN, DC24V external power supply interface. Supports SCPI and MODBUS RTU protocol.

## 2. Product Overview

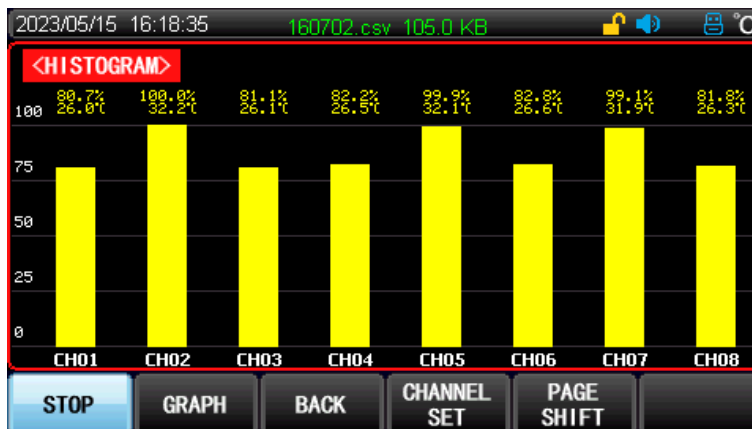
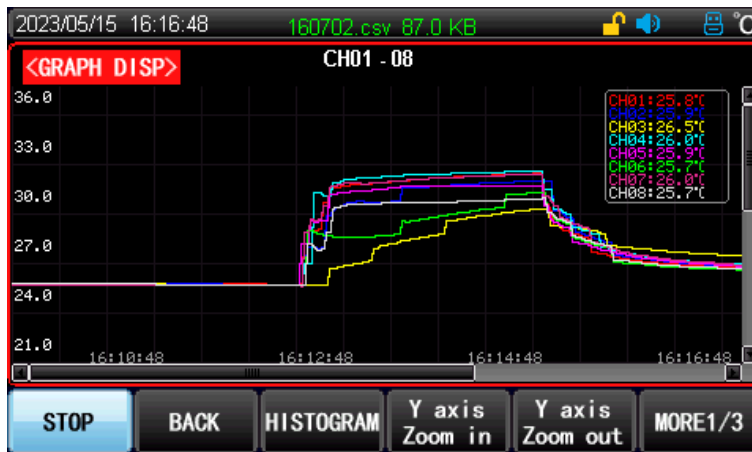
UT3200+ series multi-channel temperature tester includes six models UT3208+, UT3216+, UT3224+, UT3232+, UT3240+ and UT3248+, which respectively corresponding to 8, 16, 24, 32, 40 and 48 channels.

UT3200+ series adopts 4.3 inch true color LCD. Multi-channel temperature data can be collected at the same time. It is compatible with a variety of temperature sensors and has fast response and high stability. In addition, UT3200+ series has automatic detection of open-circuit thermocouple, over limit alarm and communication transmission functions.



### 3. Design Highlights

Various data display modes (Numerical reading/Curve chart/Histogram)



## Over limit alarm

If the measured value exceeds the upper limit, the temperature data will display with red color.  
 If the measured value exceeds the lower limit, the temperature data will display with blue color.



## 8G USB can record real-time test data and screenshots

FILE NAME 104633.csv							
TRIGGER T		10:46:33					
NUM_CHA		0:00:00					
UNIT		°C					
No.	Date Time	TC-K CH1	TC-K CH2	TC-K CH3	TC-K CH4	TC-K CH5	TC-K CH6
1	10:46:34	21.9	21.64	21.5	21.59	21.46	21.54
2	10:46:35	27.15	28.28	28.12	27.62	26.43	27.7
3	10:46:36	26.38	26.37	27.06	26.71	25.33	26.74
4	10:46:37	25.99	25.83	26.67	26.39	24.88	26.34
5	10:46:38	25.7	25.38	26.39	26.12	24.5	26.01
6	10:46:39	25.7	25.03	26.15	25.86	24.18	25.72
7	10:46:40	25.01	24.22	25.74	25.45	23.71	25.24
8	10:46:41	24.81	24.22	25.59	25.26	23.56	25.07

## Temperature Calibration (Input calibration and Input offset)



## 4. Technical Index

Model	UT3208+	UT3216+	UT3224+	UT3232+	UT3240+	UT3248+
Channel number	8	16	24	32	40	48
Display mode	Direct numerical reading, curve chart, histogram					
Interface	USB HOST, RS232C, LAN, DC24V, RS485 (optional)					
Type	Thermocouple type J,K,T,E,S,N,B,R					
Test range	-200°C - 1800°C (the range will change with different thermocouple model)					
Resolution	0.01°C					
Channel number	8-48 (channel is configured according to different model)					
Power voltage/frequency	AC 100-240V 50/60Hz					
Environmental Temperature	Temperature 15°C--35°C, humidity <80%RH					
Sensor Type	Test Range of Temperature (°C)		Accuracy of Test (°C)		Description	
Type T Thermocouple	-150 -- 0		±1.0		1. This is the accuracy of the instrument, not including the compensation accuracy of the standard contact. 2. Standard contact compensation adds ±0.5°C based on the	
Type K Thermocouple	0 -- 400		±0.8			
Type J Thermocouple	-100 -- 0		±1.2			
Type N Thermocouple	0 -- 1350		±0.8			
Type J Thermocouple	-100 -- 0		±1.0			
Type N Thermocouple	0 -- 1200		±0.7			
Type N Thermocouple	-100 -- 0		±1.5			
Type N Thermocouple	0 -- 1300		±0.9			
	-100 -- 0		±0.9			

Type E Thermocouple	0 -- 850	$\pm 0.7$	thermocouple measurement accuracy.  3. The measurement accuracy of thermocouple is subject to the standard of manufacturer.  4. The instrument is equipped with Type K thermocouple.  Temperature range: -20 - 200 °C; measurement accuracy: in -20 - 0 °C, the measurement accuracy is $\pm 1.2$ ; in 0 - 200 °C, the measurement accuracy is $\pm 0.8$ °C.  5. The isolation voltage between instrument channels is 350V DC and 230V AC.
Type S Thermocouple	0 -- 100	$\pm 4.5$	
	100 -- 300	$\pm 3.0$	
	300 -- 1750	$\pm 2.2$	
Type R Thermocouple	0 -- 100	$\pm 4.5$	
	100 -- 300	$\pm 3.0$	
	300 -- 1750	$\pm 2.2$	
Type B Thermocouple	600 -- 800	$\pm 5.5$	
	800 -- 1000	$\pm 3.8$	
	1000 -- 1800	$\pm 2.5$	

## 5. Accessories

Article	Quantity	Remarks
Multi-channel Temperature Tester	1 pcs	The actual model is subject to the order. UT3208+, UT3216+, UT3224+, UT3232+, UT3240+, UT3248+
3C Power Line	1 pcs	
8G USB	1 pcs	
8-channel Temperature Test Module	Match with model	UT3208+/16+/24+/32+/40+/48+ is respectively equipped with 1/2/3/4/5/6 group.
RS232 Communication line	1 pcs	
User's Manual		Electronic file can download from UNI-T official website.

## 6. Contact Us

UNI-T Technical Support Hotline: 400-876-7822

**UNI-T** is the registered brand of Uni-Trend Technology (China) Co., Ltd. The product information in this document is subject to change without notice, for more information about UNI-T, please visit official website <http://www.uni-trend.com>

Copyright 2023-04 by UNI-T  
All Rights Reserved.