

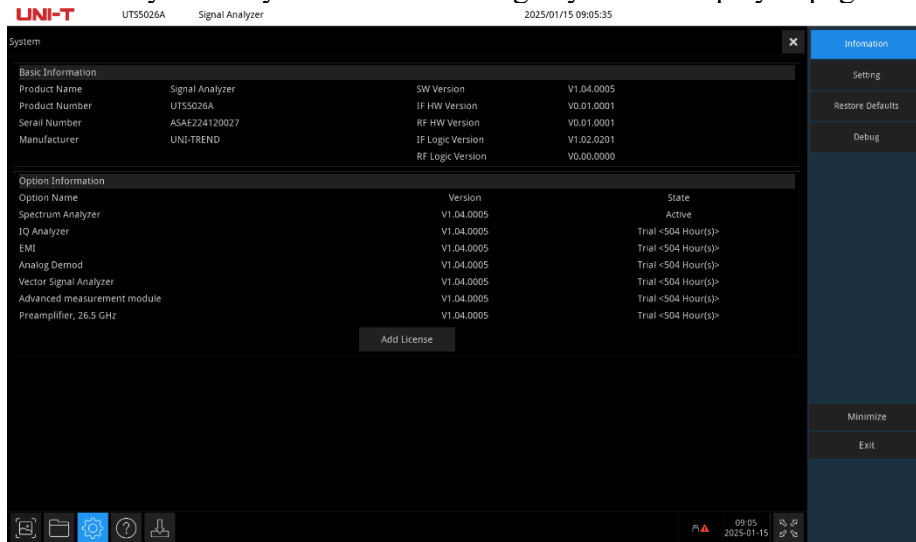
Revision Record

Date	Keyboard Version	TMC Version	Logic Version	Software Version	Revision Content
2024/08/12	3.0.0	1.0.3	1.2.2.1	1.04.0005	<ol style="list-style-type: none">1. Fixed the reference frequency setting.2. Added touch debugging interface, used to locate touch problem points.3. Improved logging, used to determine the cause of the phenomenon of waiting for departure.4. Updated the FPGA/underlying software to solve the problem of startup jamming.5. Fixed some BUGs.
2024/07/24	3.0.0	1.0.3	1.2.1.8	1.04.0001	<ol style="list-style-type: none">1. Fixed Even leakage caused by serial port operation.2. Increased IQ wave measurement in IQ mode.3. Fixed some BUGs.
2024/05/09	3.0.0	1.0.3	1.2.1.8	1.03.0060	<ol style="list-style-type: none">1. Improved the calibration.2. Added RF internal 100M square waves switch (the last one in amplitude menu).3. SCPI '\n' optional function.4. Improved the SCPI command interface function.5. Fixed some BUGs.
2024/05/09	3.0.0	1.0.3	1.2.1.8	1.03.0058	<ol style="list-style-type: none">1. Fixed the program crash caused by SCPI.2. Fixed AM demodulation bugs.3. Fixed EMI meter Avg data error.4. Fixed some BUGs.
2024/04/30	3.0.0	1.0.3	1.2.1.8	1.03.0057	<ol style="list-style-type: none">1. Fixed IQ mode SCPI, triggered functions.2. Fixed AD mode phase modulation SCPI, trigger functions.3. Added basic functions of ASK/PSK/QAM16 in VSA mode.4. Fixed some BUGs.
2024/04/10	3.0.0	1.0.3	1.2.1.8	1.03.0054	<ol style="list-style-type: none">1. Fixed the problem of long-time consumption in calculating the EMI scanning table.2. Improved the accuracy of carrier power/modulation frequency/SINAD in AD mode.3. Added ID mode, performing phase modulation and demodulation in AD mode, amplifier option support.4. Fixed some BUGs.
2024/02/27	3.0.0	1.0.3	1.2.1.8	1.03.0051	<ol style="list-style-type: none">1. Mainly repaired the problem of low frequency overload.2. Fixed some BUGs.
2024/02/19	3.0.0	1.0.3	1.2.1.8	1.03.0050	<ol style="list-style-type: none">1. Fixed the problem of DANL index exceeding.2. Fixed the problem of equipment loss after prolonged TMC operation.3. Fixed the problem of no data in 20/25M FFT.4. Fixed some BUGs.

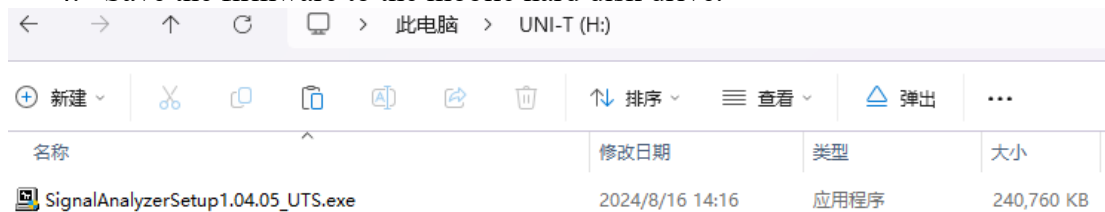
Upgrade Guide

Upgrade using by installing application software

1. Check the current hardware version of the instrument.
2. Download the corresponding version firmware from the official website.
3. Press the System key or click the Setting key on the displayed page.



4. Save the firmware to the mobile hard disk drive.



5. Plug the USB flash drive into the USB port on the front panel, close the spectrum software that is currently running, and click the software installation package on the USB.



Note:

When a logical version is being upgraded, the progress of the upgrade process will be displayed until the update is successfully completed. Similarly, when the TMC and keyboard are being updated, their respective upgrade processes will be displayed.

The device must not be powered off during the upgrade process; otherwise, irreversible issues may occur.

6. Wait until the upgrade progress is completed, power off the instrument and restart it. The upgrade will be completed after the restart.
7. After the restart, unplug the USB flash drive. Enter the system information page to view the current version information.