
Software User Manual

1. Installation

1.1 System Requirements

To Install this software, your computer should contain:

- 1G-megahertz (MHz) processor or faster
- At least 1GB of RAM
- At least 2GB of available space on the hard disk
- USB 2.0 / 3.0 Port(s)
- LAN Port(s)
- Serial port(s)

software only supports the following operating systems:

- Microsoft Windows Vista
- Microsoft Windows 7
- Microsoft Windows 8
- Microsoft Windows 10

If your Windows does not contain the corresponding service pack version, please perform a Windows update first.

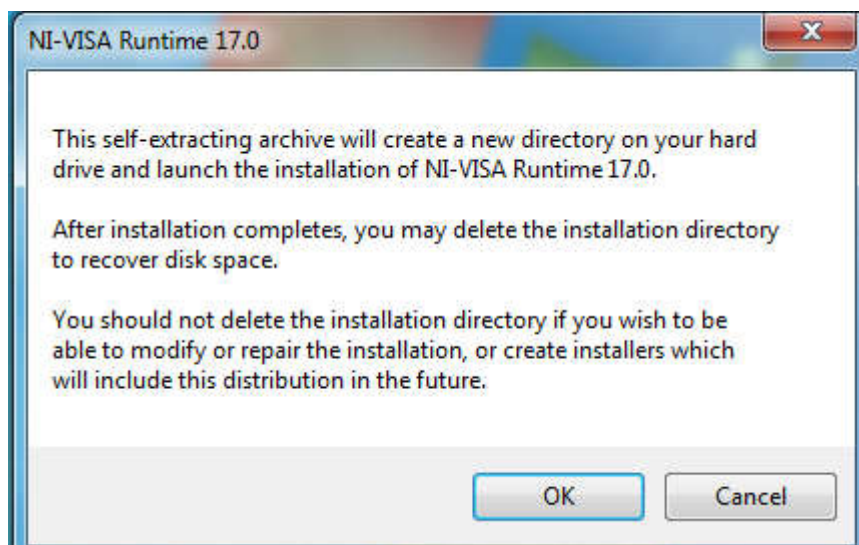
1.2 Install software

1.2.1 Insert the installation CD-ROM into your computer.

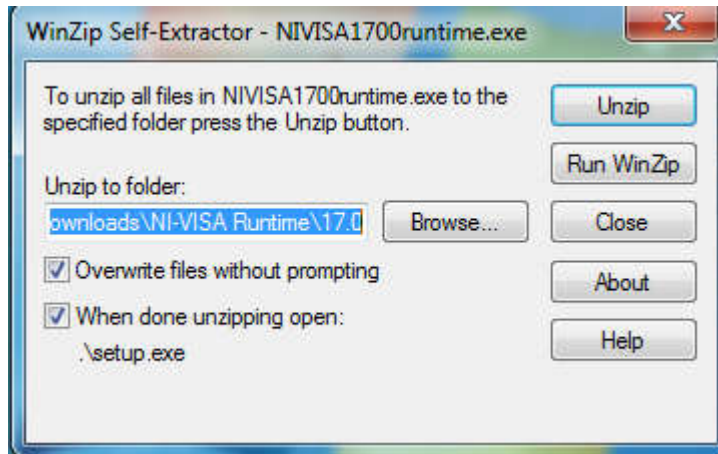
1.2.2 The menu will be opened automatically (if installation doesn't start immediately, double-click Setup.exe in your CD-ROM directory).

1.3 Install NI-VISA Runtime

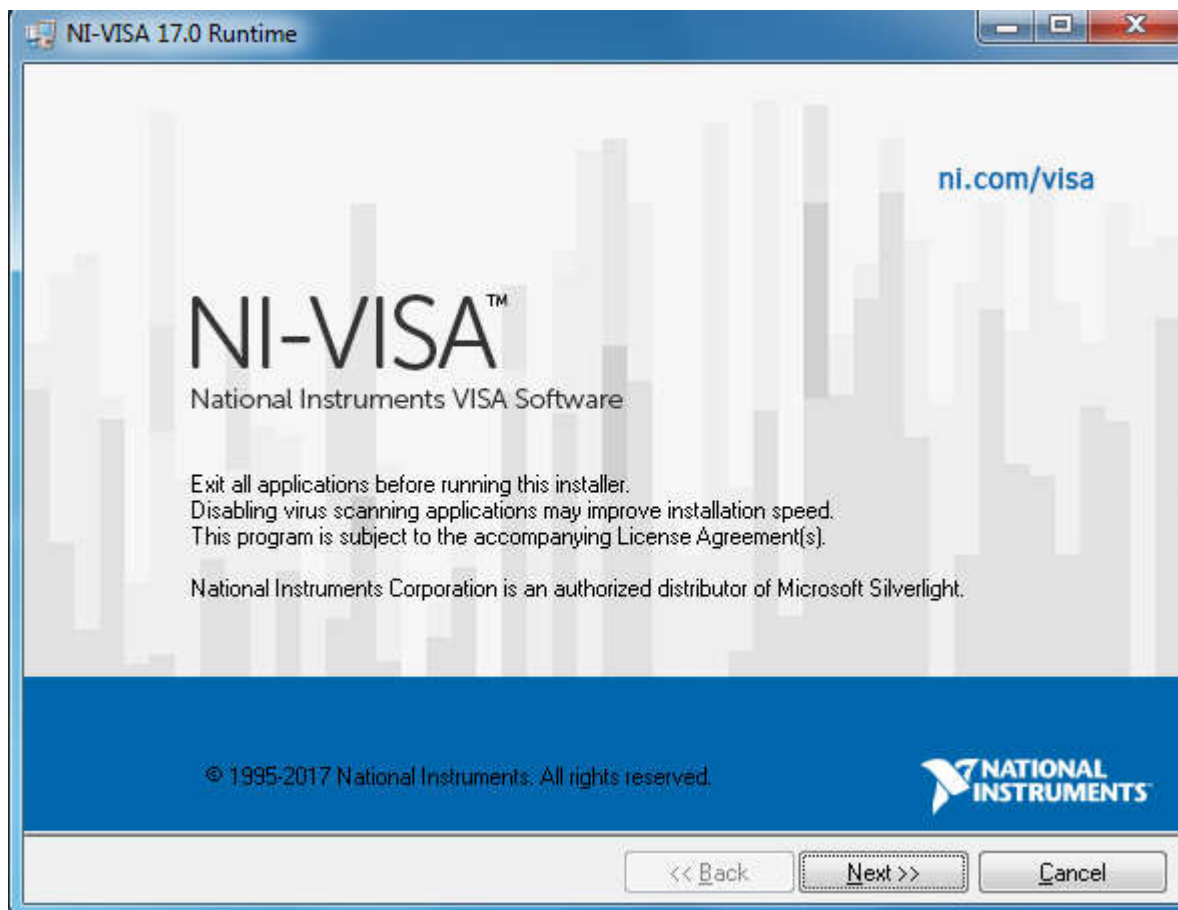
After the software is installed, the NI-VISA Runtime will be installed.



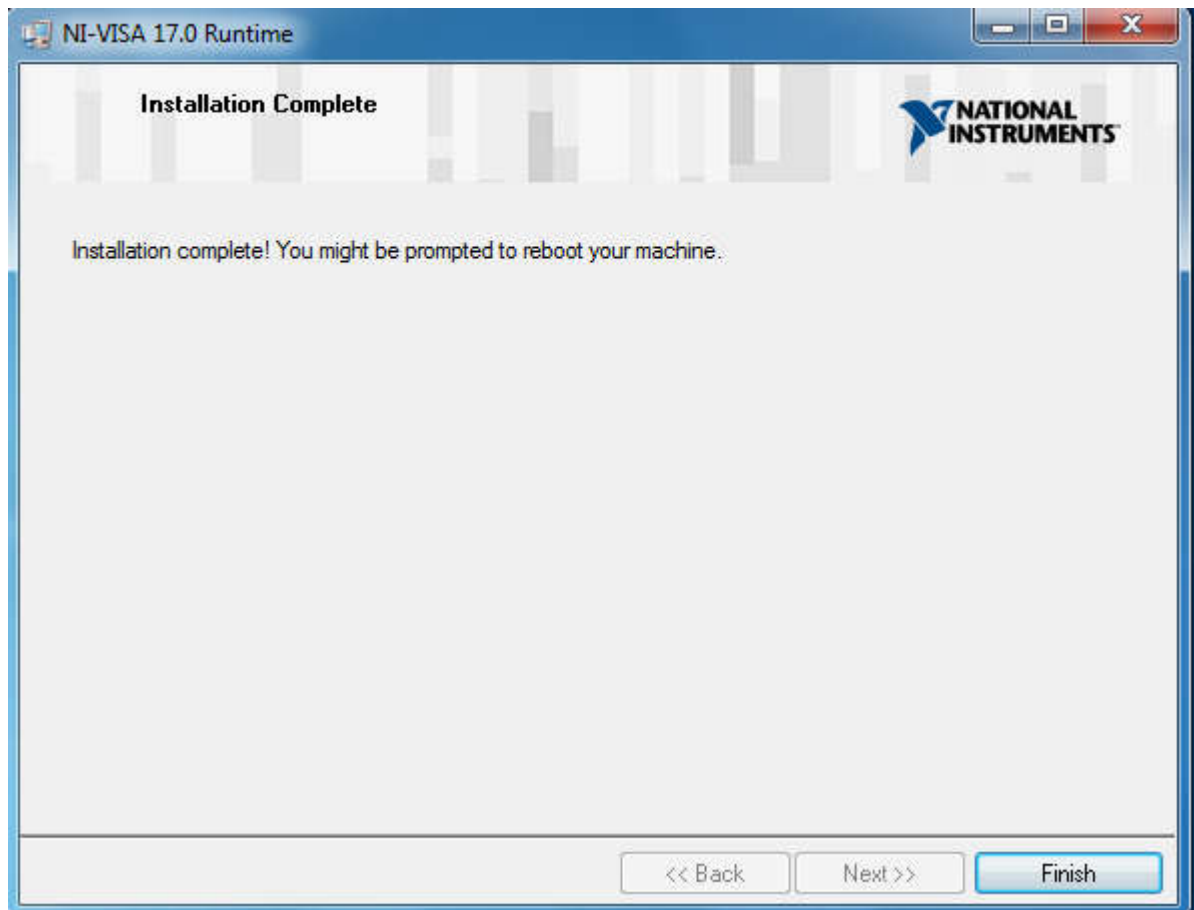
Click 'OK'.



Click 'Unzip'.



Using the default settings, keep clicking 'next' until the installation is complete.

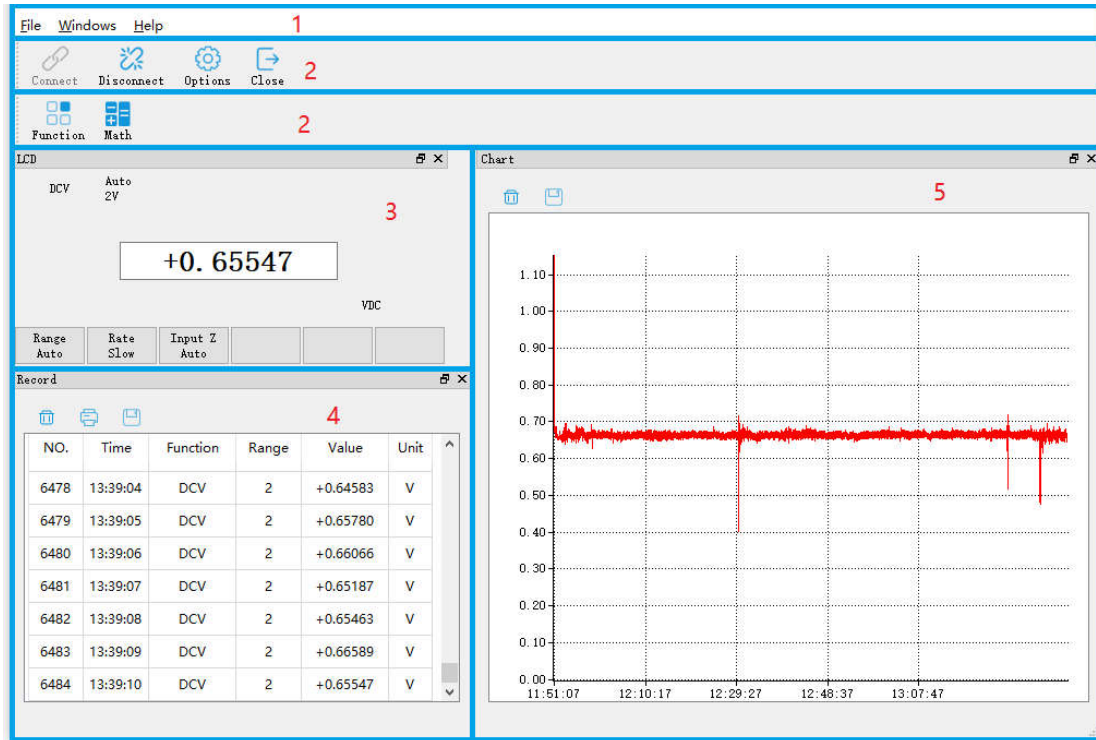


The installation is complete.

2. Launch the software

To start the application, please go to Start Menu->All Programs or Desktop.


Main screen of the software is as follows:



1	Main menu area	Users can access different functions through the main menu.
2	Toolbar area	Users can access different functions through the Toolbar.
3	Display area	Shows the current measured value.
4	Record area	Display the measure data in list form.
5	Chart area	Display the measure data in a graphical format.

3. Using the software




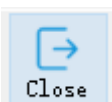

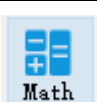


Click  connected to the PC and meter will automatically start taking measurements.

3.1 Main menu area

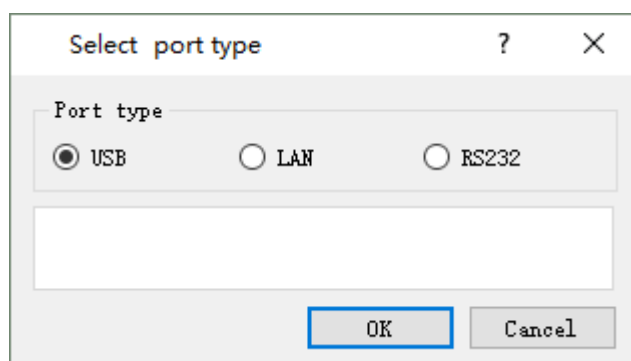
1	File -> Connect	Connect the device.
2	File -> Disconnect	Disconnect the device.
3	File -> Options	Configuration the options.
4	File -> Close	Close the software.
5	Windows -> xxx	Show/Hide the Child window.

3.2 Toolbar area

1		Connect the device.
2		Disconnect the device.
3		Setting the software.
4		Close the software.
5		Change the Function.
6		Set the math.

3.2.1 Connect the device

Can use USB, LAN or serial.



Select port type ? X

Port type

☐ USB ☒ LAN ☐ RS232

IP Address 192.168.6.127

OK Cancel

Need to set IP address when using LAN.

Select port type ? X

Port type

☐ USB ☐ LAN ☒ RS232

No. COM1

OK Cancel

Need to set serial Number when using RS232.

3.2.2 Setting the software

Options ? X

Sample points 10000 ☐ Infinite

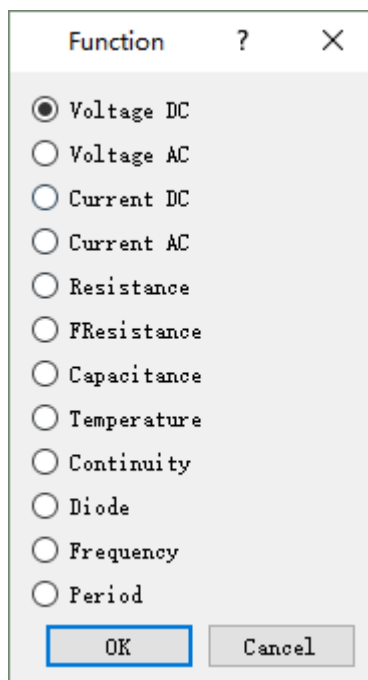
Sample rate 1s

Skip repeat reading ☐

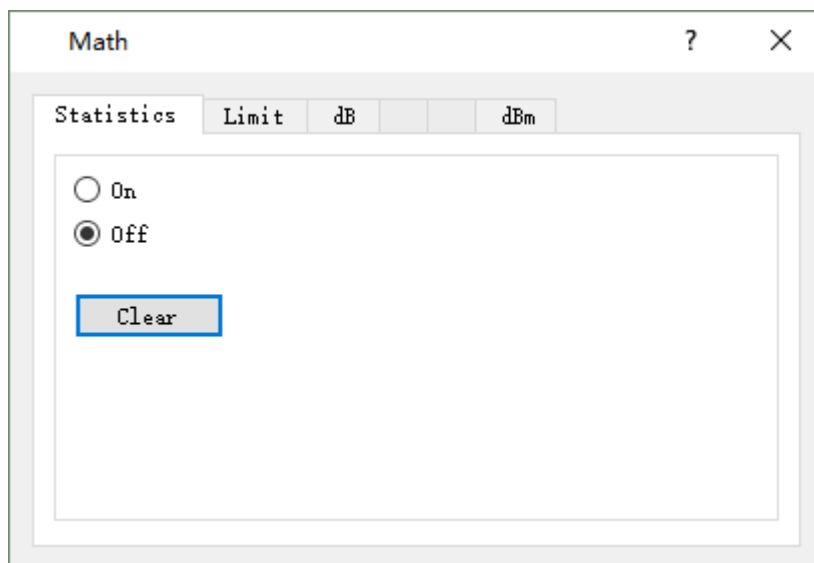
Ok Cancel

1	Sample Points	Set the points of samples.
2	Infinite	The sampling points are infinite if this option was checked.
3	Sample Rate	Set the rate of samples. If set to 0, samples will be taken at maximum rate.
4	Skip repeat Reading	Software will not record a duplicate reading if this option was checked.

3.2.3 Change the Function.



3.2.4 Set the math.



Math ? X

Statistics Limit dB dBm

☐ On

☒ Off

Upper 20.000000 V

Lower -20.000000 V

Clear

Math ? X

Statistics Limit dB dBm

☐ On

☒ Off

Resisit 600 Ω

dB Rel 0.000 db

Math ? X

Statistics Limit dB dBm

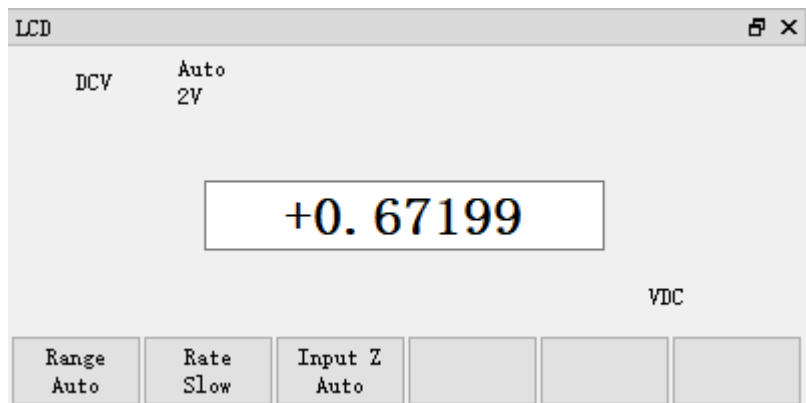
☐ On

☒ Off

Resisit 600 Ω

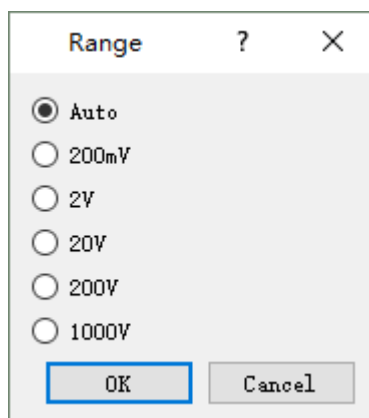
3.3 Display area

Shows the current measured value.

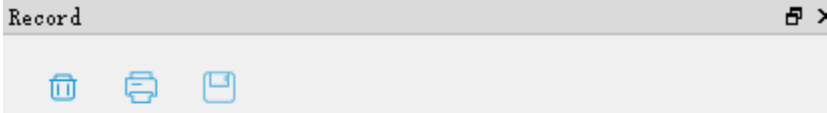


3.3.1 Change the range.




Click  Change the range.



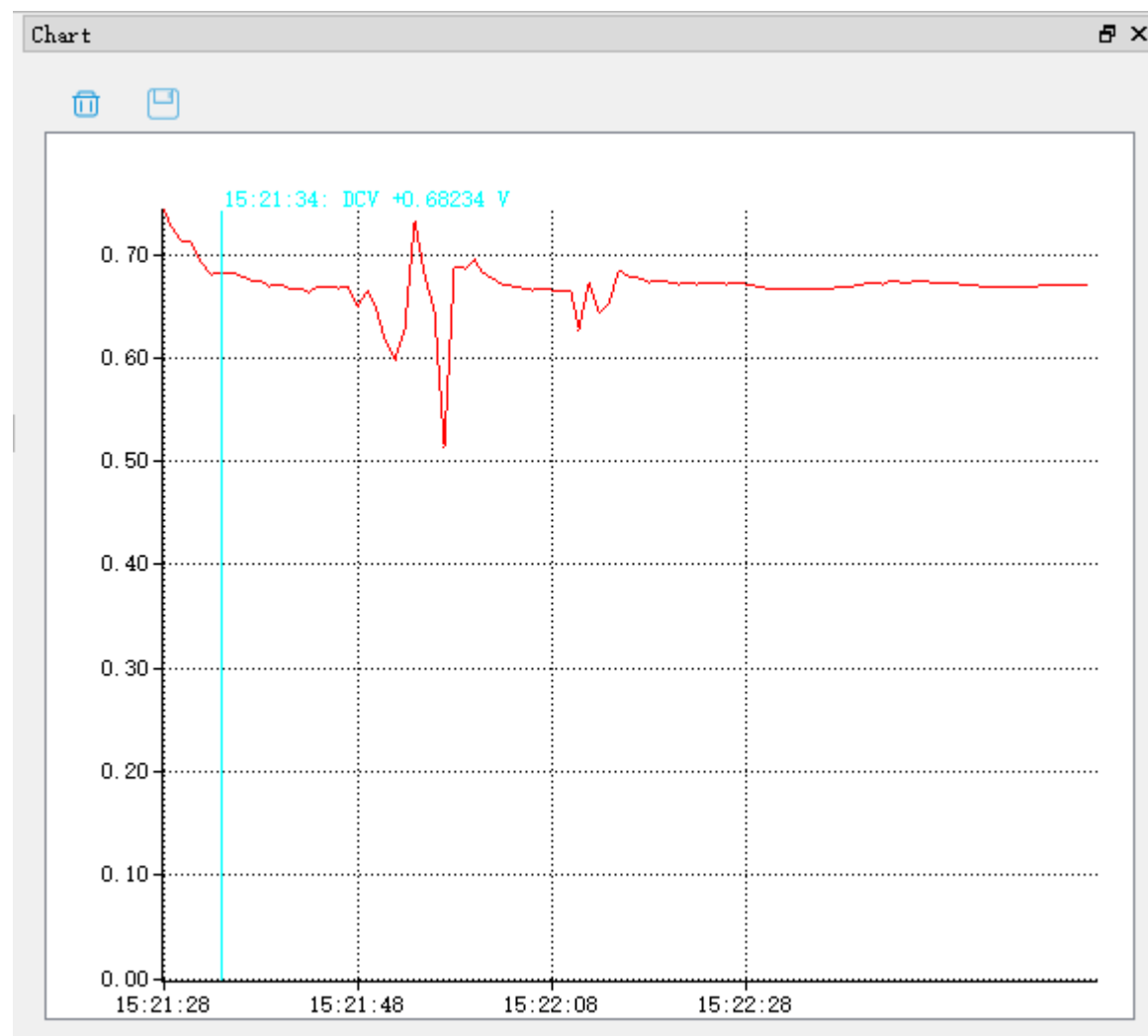
3.4 Record area





NO.	Time	Function	Range	Value	Unit
3	13:49:34	O2W	100	OL	MO
4	13:49:35	O2W	100	OL	MO
5	13:49:36	O2W	100	OL	MO
6	13:49:38	O2W	100	OL	MO
7	13:49:38	O2W	100	OL	MO
8	13:49:39	O2W	100	OL	MO
9	13:49:40	O2W	100	OL	MO

1		Delete all record data.
2		Print the record data.
3		Save the record data to XLS.

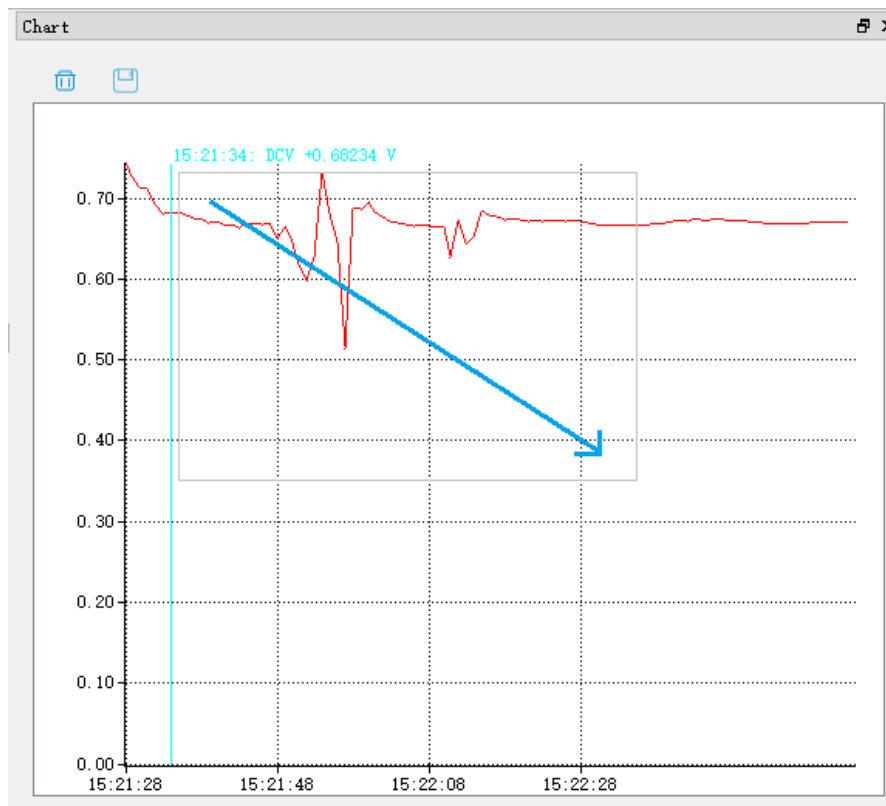
3.5 Chart area



1		Delete all chart data.
2		Save the chart to PNG.

3.5.1 Zoom in on Record Chart

Zoom in: Press down the left mouse button and drag it to lower right, and then release at a proper position. See figure below:



Restoration: Press left mouse button and drag it to upper left, and then release at a proper position. See figure below:

